

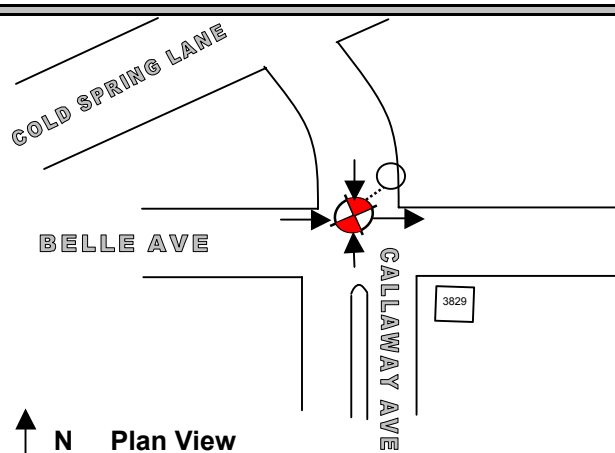
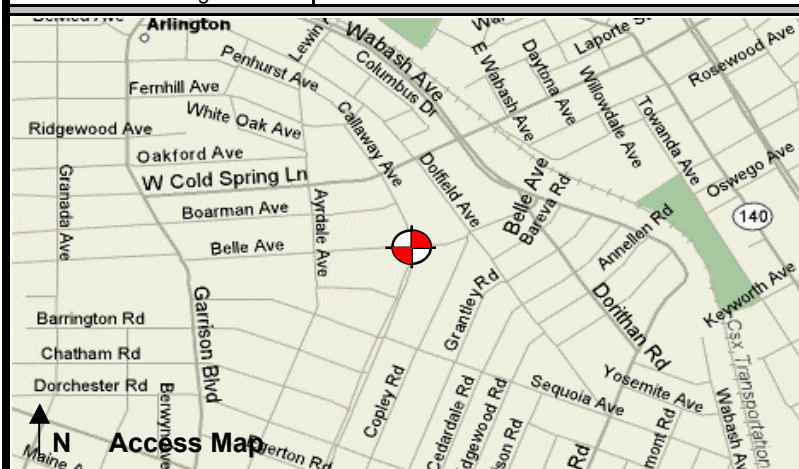
Baltimore SSO

Site Investigation Report

FM Initials: DF

Project: 10 Gwynns Run System Improvements

Site Name:	10_128S	Monitor Series:	4000 WR	Monitor S/N:		Manhole #:		Investigation Information: Upstream Input: (L/S, P/S) DNI Upstream Manhole: Downstream Manhole: Depth of Flow: 2.13" + - .25 Description of Site Hydraulics: FAST SLOW FLOW
Address / Location:	Belle Ave & Calloway Ave	Map Page #:		Map Grid #:				
		Pipe Height:	10.25"	Pipe Width:	10"			
Access:	Drive	IP Address:	CDPD					
Date/Time of Investigation:	2/7/2005 15:00 PM	GPS Coords:	N DD.dddd 39 20.014	W DD.dddd 076 40.531				


Manhole Information:

Manhole Depth: 15'

Manhole Material / Condition:
Coated / Fair

Active Drop Connections?
No

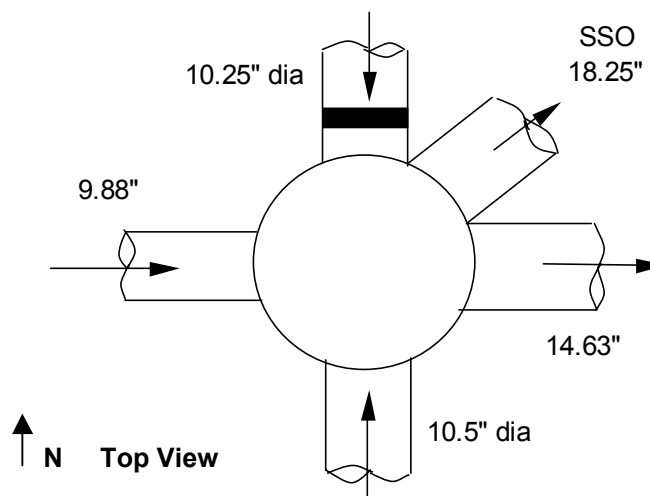
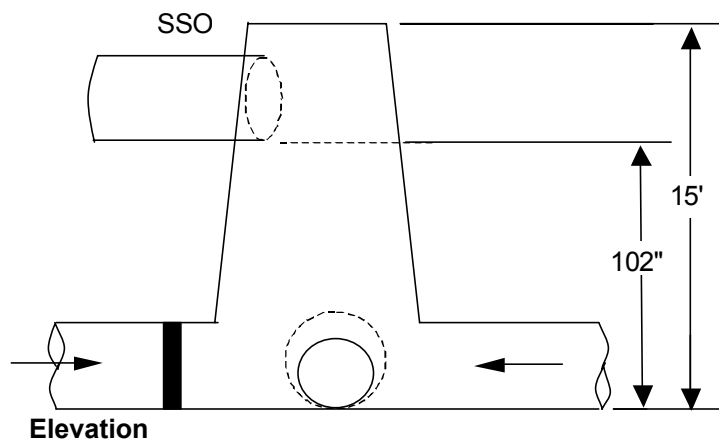
System Character:
☒ Residential
☐ Commercial
☐ Industrial

Notes:
Legend:

Cast Iron Flap Valve

Sensor Location

N.T.S.- Not to scale



The monitoring period ended as of December 31, 2007.